

WILMINGTON DOWNTOWN TRAIL FEASIBILITY STUDY

PHASE 2 AND PHASE 3

Project Overview

The Wilmington Urban Area Metropolitan Planning Organization (WMPO) is partnering with the North Carolina Department of Transportation Integrated Mobility Division (NCDOT IMD) to conduct a feasibility study for Phase 2 and Phase 3 of the Wilmington Downtown Trail. The purpose of this study is to provide a preferred alternative and trail alignment for these phases.

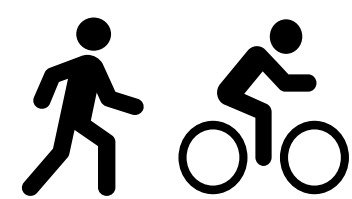
Phase 1 connects from 3rd Street to the Love Grove Bridge, with the first 0.5-mile of the trail corridor running along the former Atlantic Coast Railway and the future site of the Wilmington Rail Trail. Phase 2 connects from Archie Blue Park to Market Street (via the Love Grove Bridge or a new bridge), and Phase 3 connects from Market Street to Forest Hills Drive.

Later in 2023, the preliminary Phase 1 project documents will be available for public review (date yet to be determined). Stay tuned for updates as we get closer to that milestone!

Project Goals



Establish a vision for the trail alignment



Connect the trail to the existing and planned multimodal network



Preserve and enhance neighborhood character and history



Build on previous planning efforts



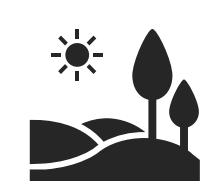
Support public health and safety



Provide guidance and requirements for design

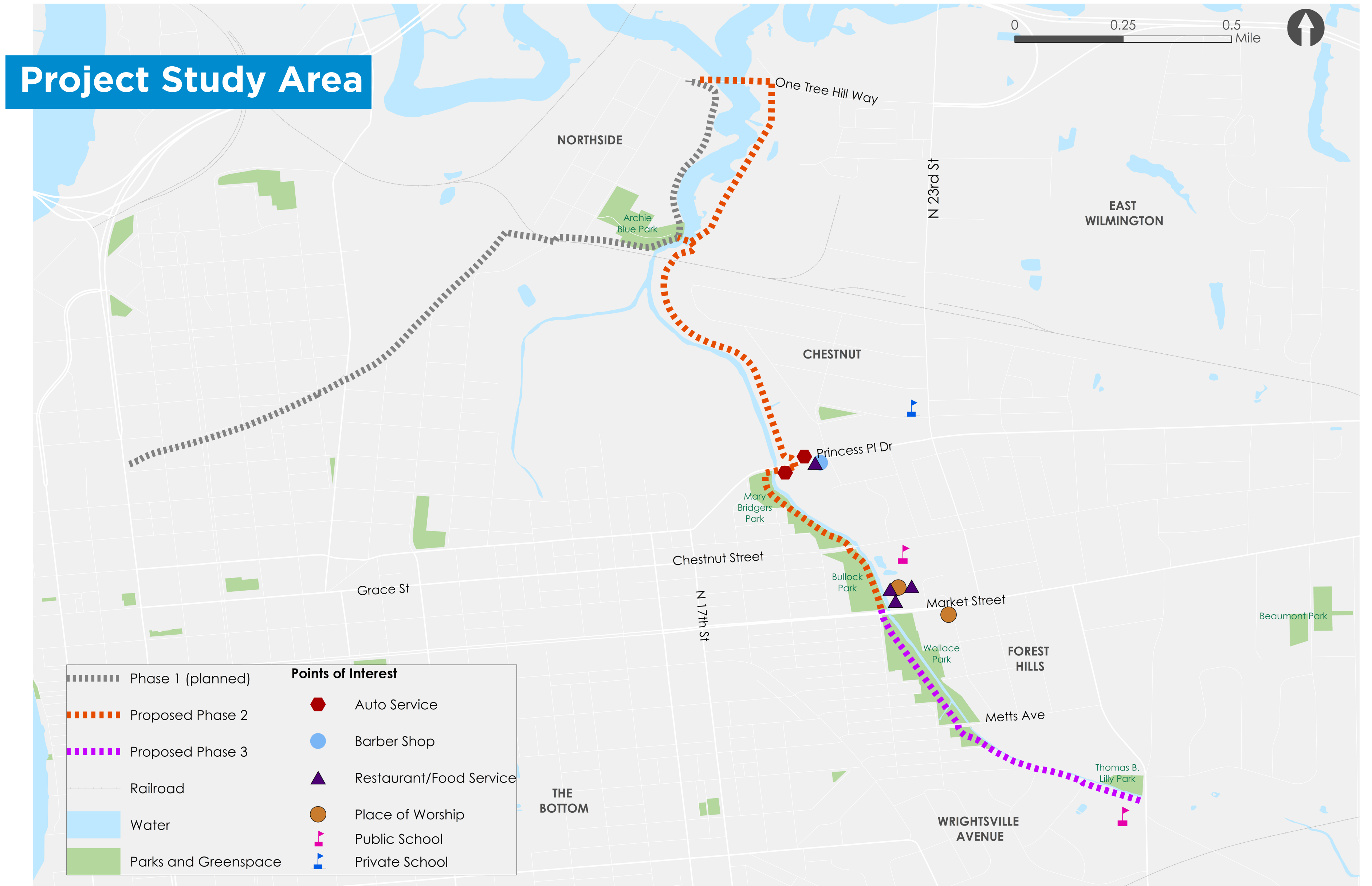


Encourage economic development along the trail



Enhance environmental stewardship and preserve natural assets

Please visit the project website for more information and the online survey!



Project Timeline



WILMINGTON DOWNTOWN TRAIL FEASIBILITY STUDY

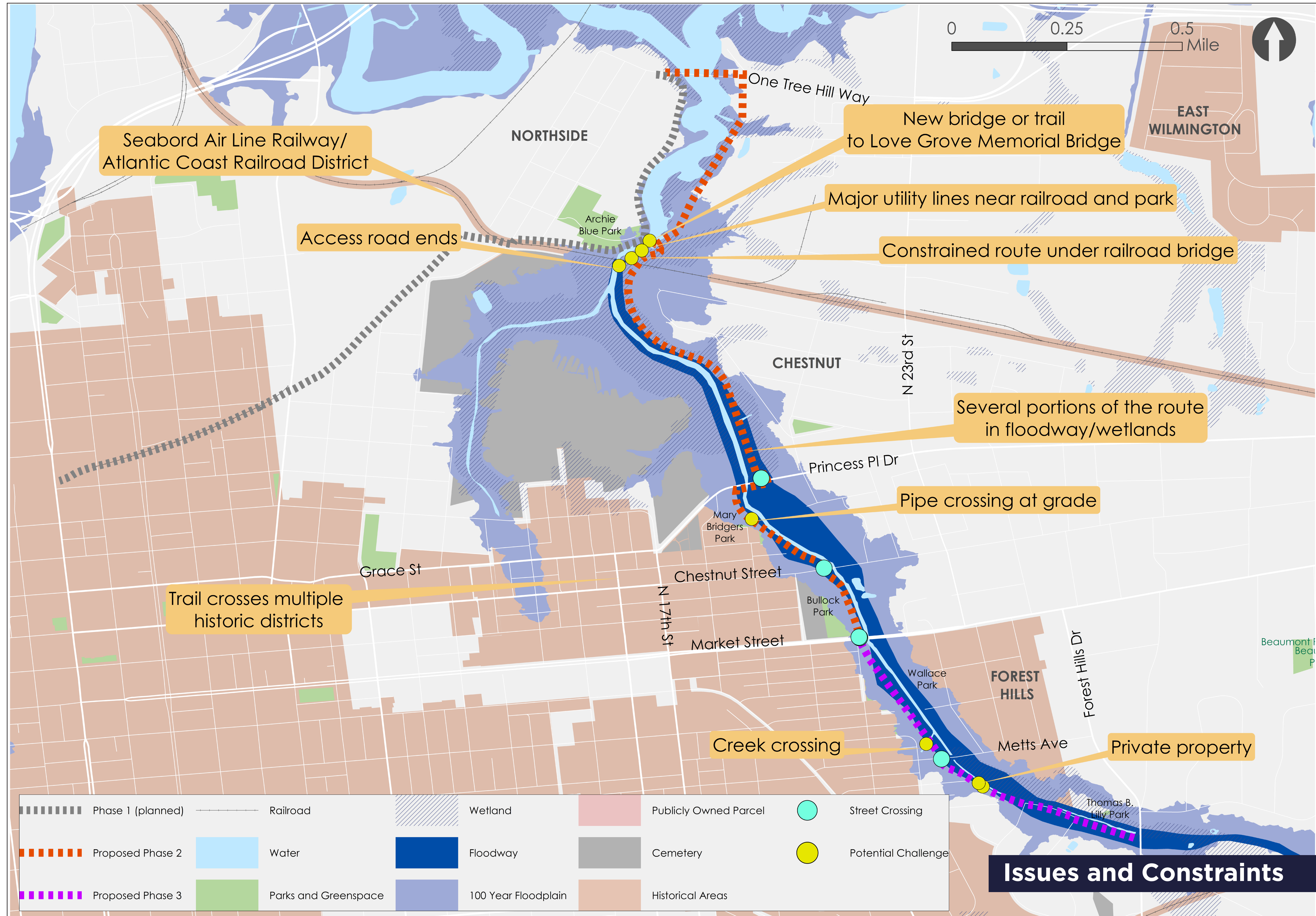
PHASE 2 AND PHASE 3

Issues and Constraints

Issues and constraints refer to challenges connecting Phase 1 to Forest Hills Drive. Constraints include environmental, built environment, and cultural/historical assets along the proposed Phase 2 and Phase 3 of the Wilmington Downtown Trail.

Key Constraints:

- Major utility lines cross Burnt Mill Creek near the CSX Railway bridge and Archie Blue Park
- Wetland and creek and crossings
- Much of trail in floodway
- Railroad bridge crossing
- Trail crosses through multiple historic areas
- Four road crossings, including Market Street



Issues and Constraints

WILMINGTON DOWNTOWN TRAIL FEASIBILITY STUDY

PHASE 2 AND PHASE 3

Context and Opportunities

The corridor connects community assets as well as recreational, historical, residential, and commercial resources. It is also well integrated into the existing and future multimodal network. Phase 2 and Phase 3 of the Wilmington Downtown Trail has the potential to further connect communities to assets, resources, and planned projects.

Key Opportunities:

- Connects to existing and planned multimodal network
- Connects to transit service, five parks, and two schools
- Can use existing bridges for creek and stream crossings
- Existing user paths demonstrate demand
- Majority of corridor on existing parkland and greenspace



Project Study Area

0 0.25 0.5 Mile



NORTHSIDE

EAST WILMINGTON

CHESTNUT

FOREST HILLS

THE BOTTOM

WRIGHTSVILLE AVENUE

Archie Blue Park

Mary Bridgers Park

Bullock Park

Wallace Park

Thomas B. Lilly Park

Beaumont Park

One Tree Hill Way

N 23rd St

Princess Pl Dr

Chestnut Street

N 17th St

Market Street

Metts Ave

Grace St

	Phase 1 (planned)	Points of Interest		Auto Service
	Proposed Phase 2		Barber Shop	
	Proposed Phase 3		Restaurant/Food Service	
	Railroad		Place of Worship	
	Water		Private School	
	Parks and Greenspace		Public School	