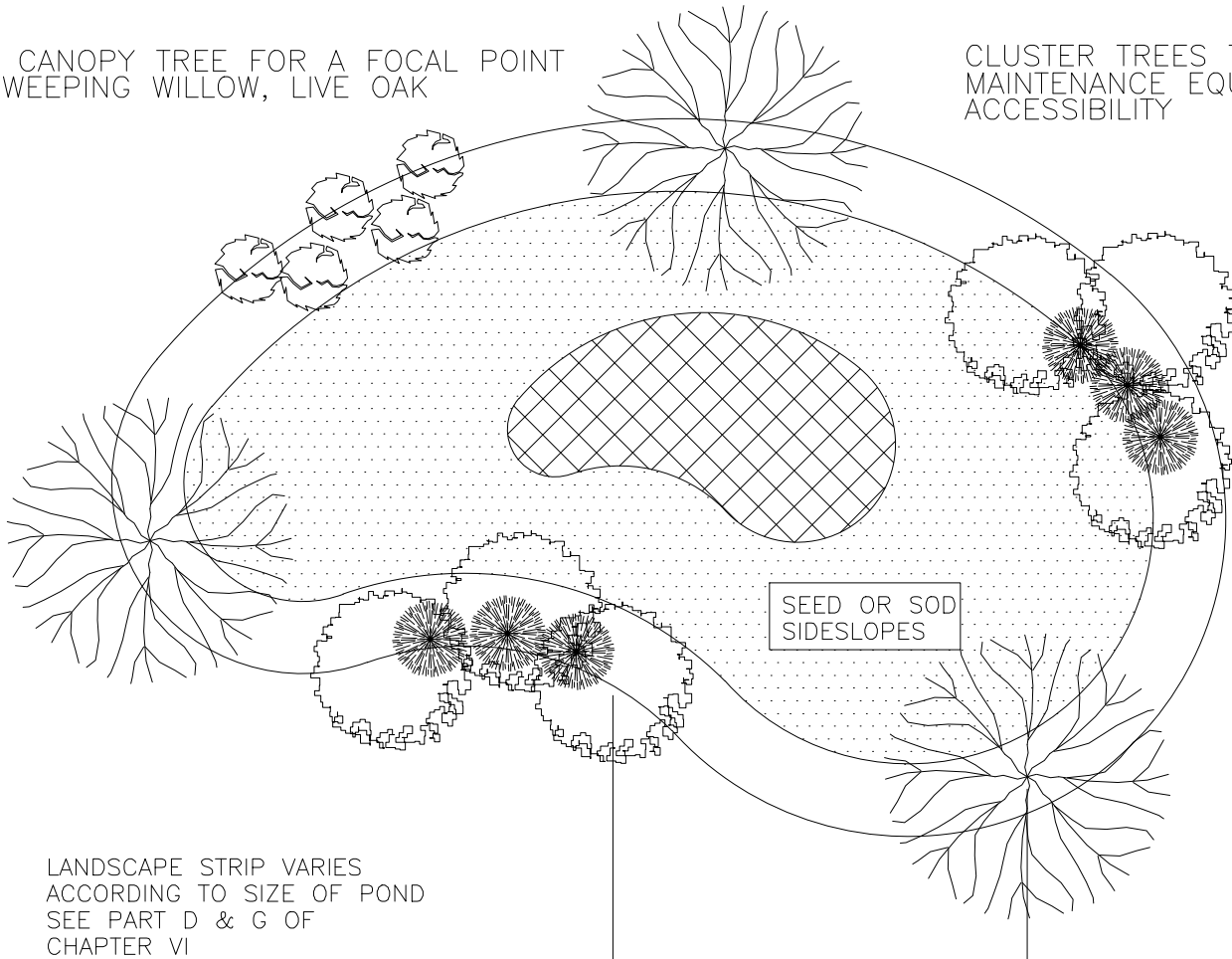


CLUSTER SHRUBS FOR
LOW MAINTENANCE

CANOPY TREE FOR A FOCAL POINT
WEeping WILLOW, LIVE OAK

CLUSTER TREES TO ALLOW
MAINTENANCE EQUIPMENT
ACCESSIBILITY



LANDSCAPE STRIP VARIES
ACCORDING TO SIZE OF POND
SEE PART D & G OF
CHAPTER VI

100'
VEGETATION MUST BE EVENLY
DISTRIBUTED AT APPROXIMATELY
100' INTERVALS AROUND POND

Notes:

1. If possible, locate pond where vegetation exists.
2. Suggest minimal clearing to conserve visual quality of site and minimize the additional of tree planting. An irregular shape provides a more natural appearance.
3. Landscape strip shall be a maximum slope of 7:1 in order to plant vegetation.
4. Provide a minimum of 3 inches of mulch around all vegetation.

STANDARD DETAIL		 <p>CITY OF WILMINGTON ENGINEERING PO BOX 1810 WILMINGTON, NC 28402 (910) 341-7807</p>
DATE:	JULY 2003	
DRAWN BY	JSR	
CHECKED BY	B.P., P.E.	
SCALE	NOT TO SCALE	
<p>TYPICAL STORM WATER FACILITY LANDSCAPING PLAN</p>		<p>SD 15-16</p>