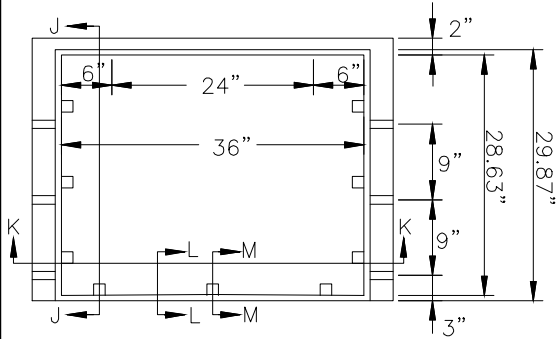
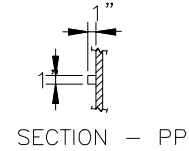
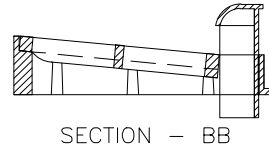
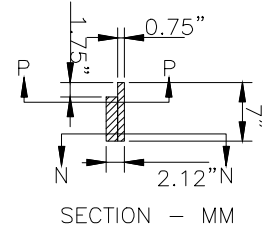
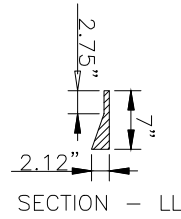
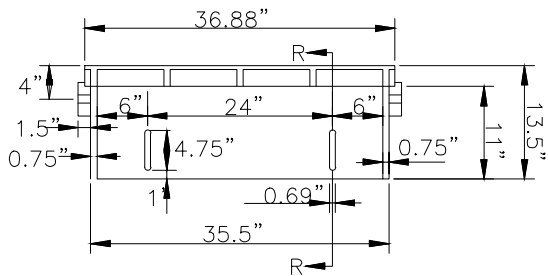
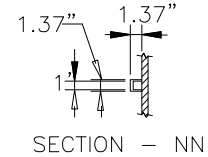
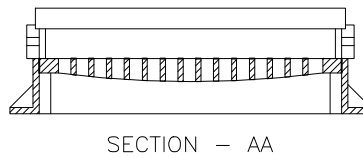


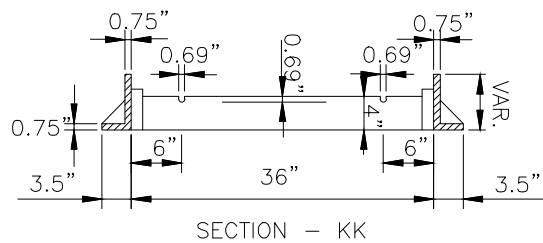
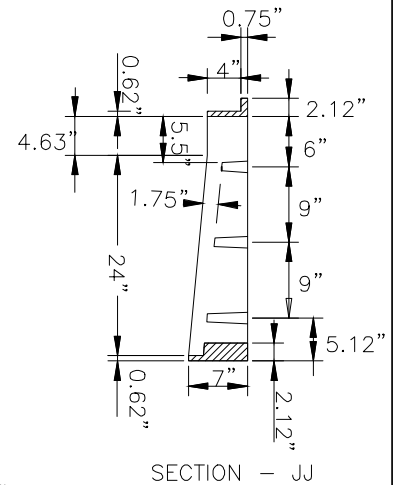
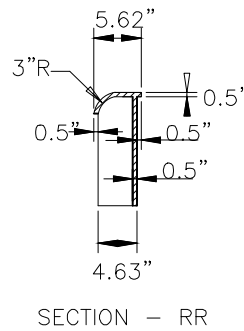
PLAN
FRAME, GRATE & HOOD ASS'Y



FRAME PLAN



HOOD ELEVATION



- NOTES: 1) USE TYPE "E", "F", & "G" GRATE UNLESS OTHERWISE INDICATED
 2) TOP OF HOOD CASTING SHALL HAVE RAISED LETTERS WHICH SAY: "KEEP STORM DRAIN CLEAN! DRAINS TO CREEK" PROVIDE PICTURE OF FISH BETWEEN TWO STATEMENTS.

STANDARD DETAIL

CATCH BASIN CASTING
FOR 30" HOOD AND GRATE



CITY OF WILMINGTON ENGINEERING
PO BOX 1810
WILMINGTON, NC 28402
(910) 341-7807

DATE:	2001
DRAWN BY	JSR/CMR
CHECKED BY	B.P., P.E.
SCALE	NOT TO SCALE

SD 2-19