



BASIC GARDENING 101

Cool-Season Seeds: This type of seed germinates in cold soil and matures with cool weather and short periods of daylight, meaning they are perfect for planting in early spring.

Warm-Season Seeds: This type of seed requires higher soil and air temperatures; they are always planted after the last frost date.

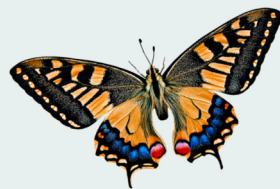
Container Garden: This type of garden is established in containers rather than planting them in the ground. A container is a small, enclosed and usually portable object used for displaying live flowers or plants.

Annuals: A plant that completes its entire lifecycle (sprouts, fruits and/or flowers, and produces seed) in one year or less.

Perennials: A plant that returns every spring.

Biodegradable: A material that will eventually break down or naturally decompose under the right conditions – such as with the help of bacteria, fungi, and oxygen.

Compost: In the simplest terms, compost is decomposed organic matter. It is considered a premium organic soil amendment, and offers numerous benefits to soil and plant health.



Derick G.S. Davis Center
1101 Manly Ave
Wilmington NC 28405

Phone: 910.341.7867
Email: Isaiah.lubben@wilmingtonnc.gov
Email: Gabriel.guerra@wilmingtonnc.gov



WILMINGTON
CITY OF
PARKS AND RECREATION

MAIDES PARK SEED LIBRARY





What is a Seed Library?

A seed library is just how it sounds— it loans seeds to gardeners. A seed library takes some time and effort to put together, but the way the library works is very simple: gardeners “borrow” seeds from the library at planting time. At the end of the growing season, they save seeds from the plants and return a portion of the seeds to the library.

Simply fill out our seed request form, pick-up your seeds and your informational packet, and start planting today!

Need help getting started? Ask us about our beginner gardener packet!

How Does The Seed Library at Maides Park Work?



- Each ‘library cardholder’ may check out up to three packets of seeds per visit.
- Seeds harvested and returned from the seeds you ‘checked out’ are encouraged but not required.
- If you have grown plants from the seeds that you have checked out, and they have successfully produced seeds, please return your harvested seeds to the Maides Park Seed Library!
- We will repackage your harvested seeds and put them into circulation so that everyone can try their hand at growing them.

How Do You Harvest Seeds?

1. Cut flower/crop head with scissors or a knife.
2. Collect the ripe seeds from the flower/crop head and place on waxed paper.
3. Allow the seeds to dry for about a week.
4. Clean the seeds by removing any husks or pods.
5. Place seeds in an envelope and seal. Store in an airtight container in a cool, dark, dry location.

