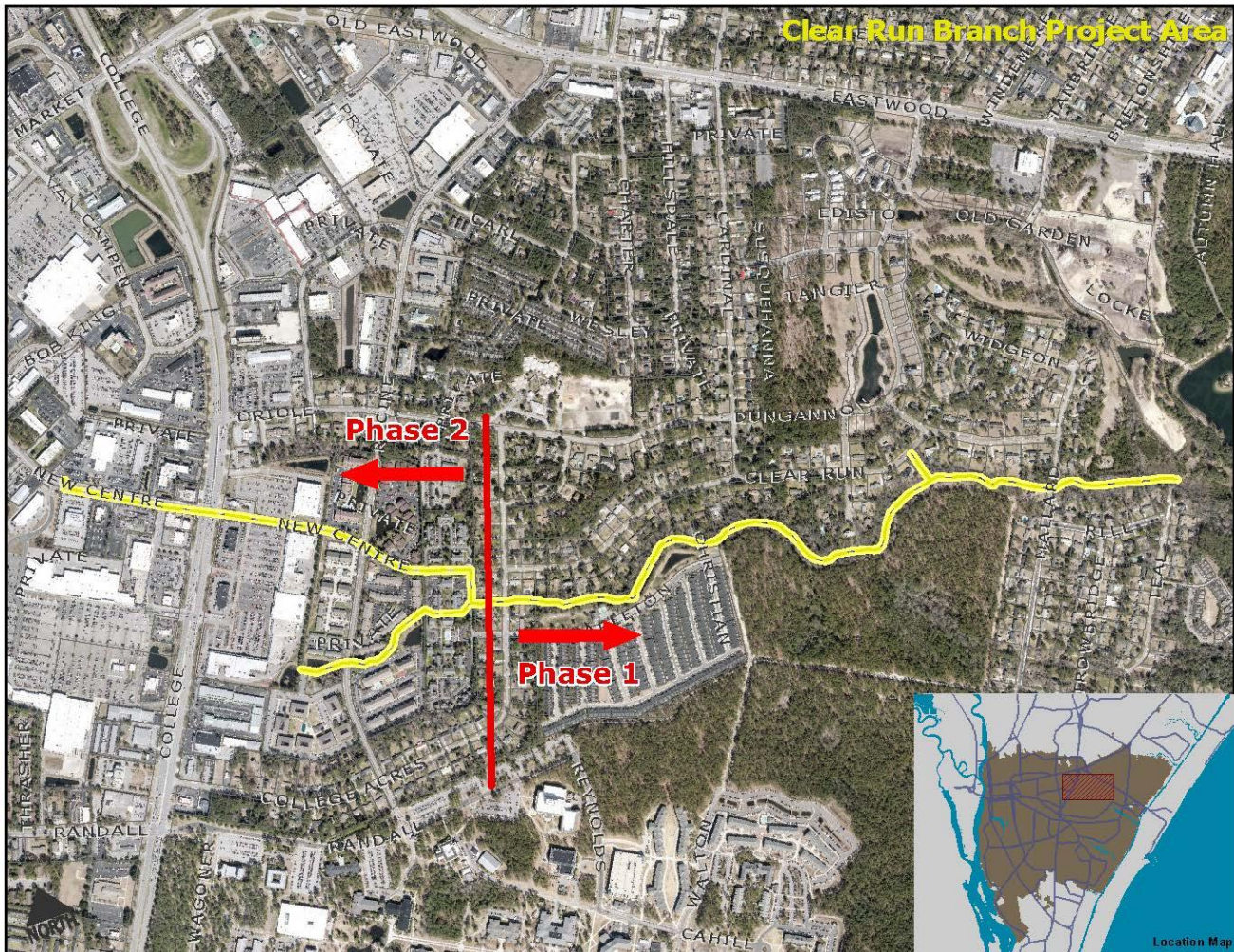


CAPITAL DRAINAGE IMPROVEMENT PROJECT

CLEAR RUN BRANCH – PHASE 1 & 2



This map illustrates Phase 1 and 2 of the Clear Run Branch drainage improvement project. This is the largest stormwater capital improvement project that the City of Wilmington has undertaken to reduce chronic flooding, improve water quality, and enhance natural habitat. Clear Run Branch is highly impacted and impaired due to excessive stormwater flows from upstream development.

Phase 1: Install large box culverts (pipes) to convey stormwater under College Acres Drive and Mallard St. This phase also includes major stream restoration and floodplain creation to increase flood storage capacity and improve the natural characteristics of Clear Run Branch stream.

Phase 1 construction is likely to begin by early 2021.

Phase 2: Install large culverts to capture and convey floodwaters from the S. College Road/New Centre Drive commercial areas and tie into the drainage improvements installed during Phase 1. Phase 2 also includes incorporating as much green infrastructure as possible help filter out pollutants and reduce the amount of runoff flowing from impervious surfaces into Clear Run Branch, then ultimately Bradley Creek.