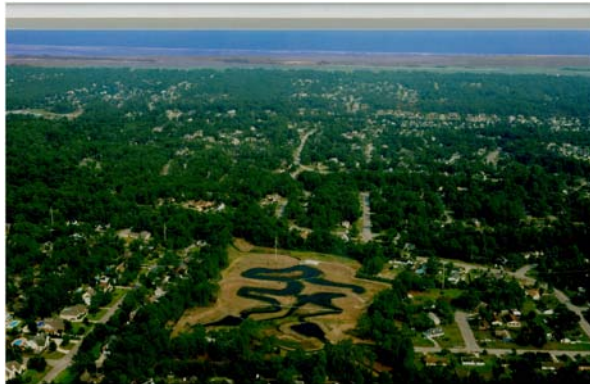


2008 North Carolina Coastal Federation Pelican Award

Conservation/Restoration



James E.L. Wade Stormwater Wetland and Community Park

Awarded to the City of Wilmington Stormwater Services and New Hanover County Planning Department

New Hanover County and the City of Wilmington joined forces to obtain funding from the N.C. Clean Water Management Trust Fund to acquire 17 acres and build an 11-acre stormwater wetland in the Hewlett's Creek watershed. This project diverts two major stormwater outfalls away from the shellfish waters of the creek and into a series of created stormwater wetlands.

The stormwater wetland helps to capture and treat polluted runoff from about 10 percent of the watershed. The wetland also serves as critical habitat for native and migratory birds, animals and plants and is the largest constructed stormwater wetland in the area. After the wetland construction, the city installed a passive park on the same site.

The park is named for James E. L. Wade, a former mayor and community activist. The project is part of an overall effort to restore Hewlett's Creek and its shellfish waters.